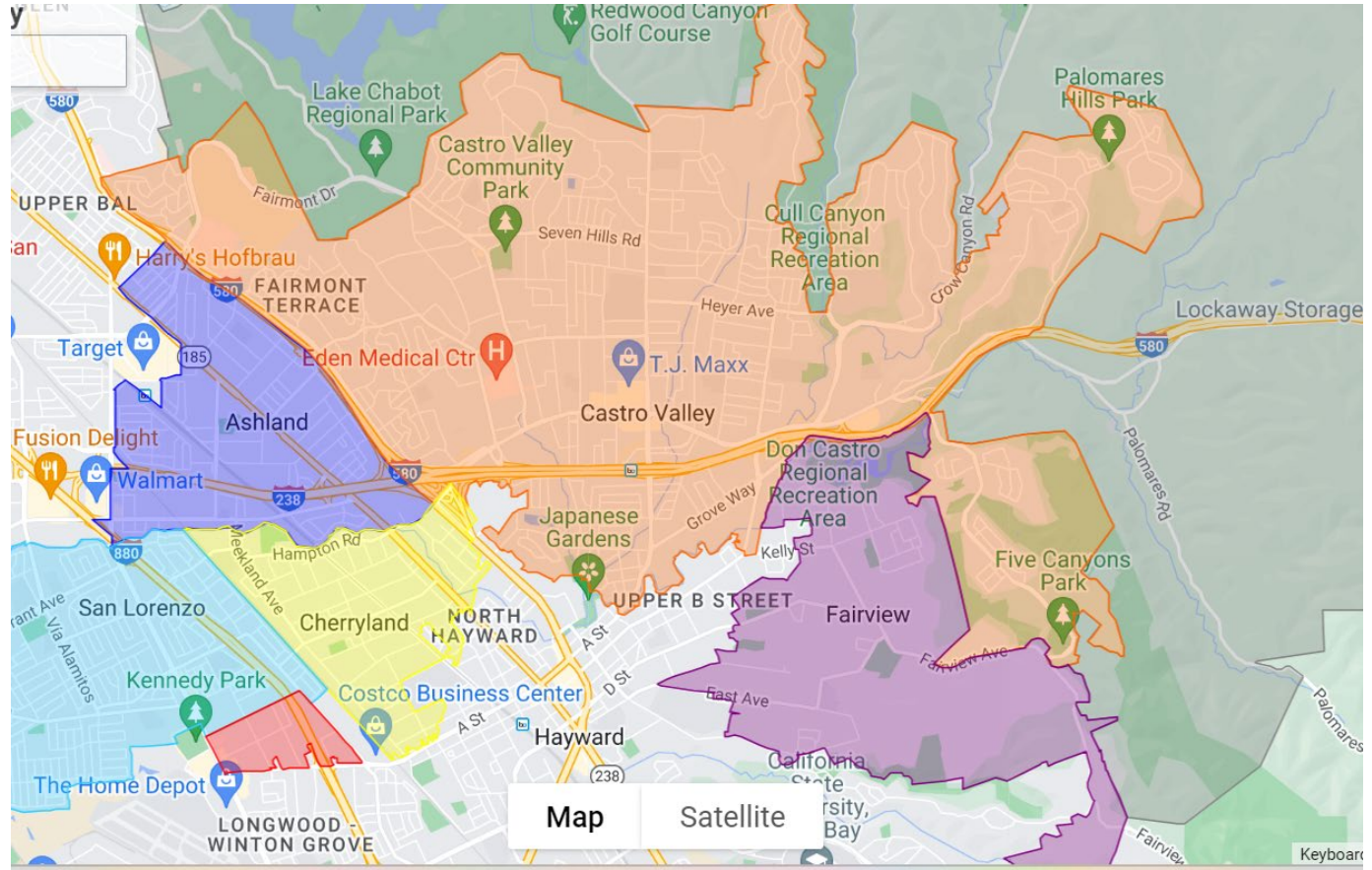




Workforce Development Community Navigator

Serving the unincorporated areas of Alameda County

Presentation by: Dayanna Montano & Yuliana Wiser-León



Workforce Development Navigator

Historical Context

- A legacy of inequity, disinvestment and inequitable outcomes for urban unincorporated residents
 - Ashland, Cherryland, Hayward Acres, Parts of San Lorenzo, and Parts of Castro Valley have significantly less resources/investment than their incorporated neighbors
 - Residents have struggled with higher poverty, poor health outcomes, and lower education levels and have often struggled to navigate living in Alameda County
 - Years of community engagement led us to understand that the community wants low-barrier, culturally responsive programming from trusted messengers





Eden Empowerment Hub

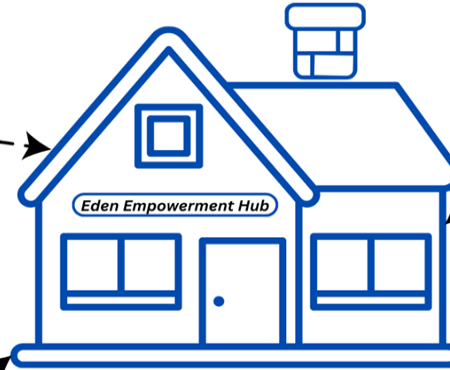
The Eden Empowerment Hub will offer culturally competent programming that strengthens community voice, increases pathways to financial well-being, and the accessibility of high-quality, peer-to-peer mental health programming. We see the Eden Empowerment Hub as a hub where innovative approaches and new partnerships can thrive.

Economic Development

We are committed to delivering financial literacy programs, including initiatives like lending circles, with the goal of enhancing economic well-being within our unincorporated communities.

Workforce Development

We are developing comprehensive programs promoting financial literacy and sustainability, facilitating access to employment opportunities and upskilling programs, while also providing assistance in areas such as housing, healthcare, and legal support.



Mental Health

The Eden Empowerment Hub is dedicated to engaging youth, parents, and caregivers in creating and delivering culturally competent, accessible programs such as peer-to-peer mental health programs.

Service Navigation

Through direct service and engagement with clients, Eden Empowerment Hub will support clients in the process of navigating services in a culturally competent and language accessible way.

Community Health and Pandemic Recovery

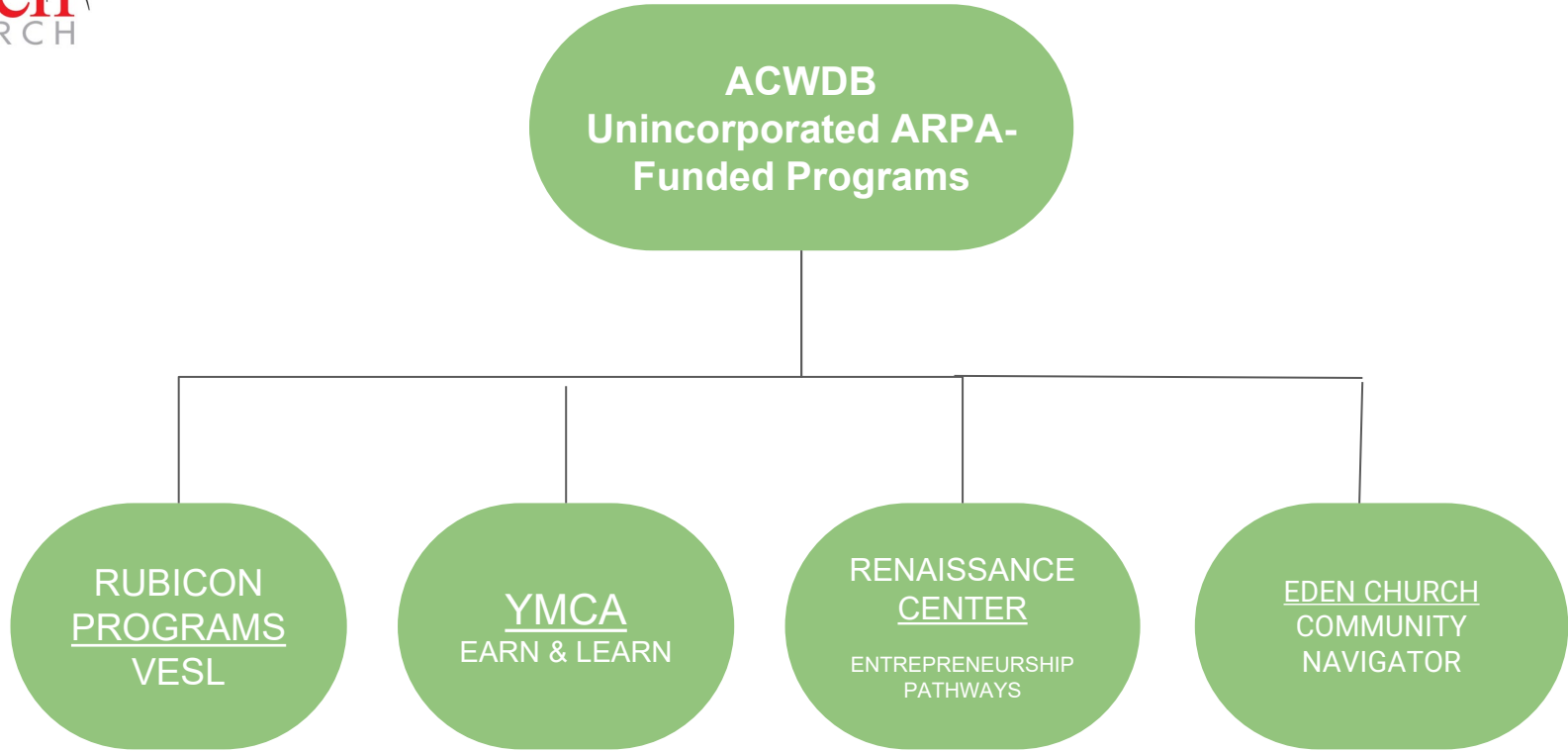
With community partners, we formed the Resilience and Vaccination Coalition to expand engagement, education, and resources for vaccinations and recovering from the pandemic.

Workforce Development Navigator



In 2023, **ACWDB** allocated American Rescue Plan Act (ARPA) funds to support workforce services for residents of the unincorporated areas of Alameda County.

The ARPA funds brought a lot of excitement to our community as we were able to provide referral and information to community members through the Workforce Development Navigator project.





Eden Church collaborates with **Rubicon Programs, Renaissance Center** and **YMCA**, to learn about their programs and then to share information about those opportunities and resources with residents from the unincorporated areas of Alameda County



In partnership with **Rubicon Programs and the San Lorenzo Adult School**, **Eden Church** launched a technology literacy opportunity through basic computer skills classes.

During the months of December 2023 and January 2024, **Eden Church** engaged in outreach activities to recruit individuals from both **Spanish and English speaking communities**.

A total of **34 participants** were enrolled and have been consistently showing enthusiasm to continue with the classes



Spanish class

Workforce Development Navigator



English Class

Workforce Development Navigator



With **Renaissance Entrepreneurship Center (REC)** we have found a space for residents who have shown interest in being entrepreneurs or who already have a small business plan and are trying to make it a reality. REC offers the guidance and support of consulting experts.

So far more than **15 residents** are waiting to start the courses that REC offers.



The **YMCA** has offered us the opportunity to provide early childhood development education courses in **English and Spanish**. The **Spanish class** is set to begin in the Fall.

2 participants have enrolled in the Earn and Learn English course.



Registration for Early Childhood Development education course

Workforce Development Navigator



Eden Church is presently in the process of creating a website for residents of the **unincorporated areas** of Alameda County. This resource will provide access to workforce information and resources and will offer access to vetted information for community members.

Community Navigation

Bringing workforce programs and services in the urban unincorporated communities of Alameda County – Ashland, Cherryland, Hayward Acres, San Lorenzo, and Castro Valley and Fairview through navigation activities that help residents connect to services that promote economic inclusion and upward mobility.

- ✓ **CREATING A SAFE, WELCOMING AND CULTURALLY RESPONSIVE SPACE FOR COMMUNITY MEMBERS**
- ✓ **BUILDING RELATIONSHIPS AND TRUST IN THE COMMUNITY**





Our Progress

PERFORMANCE MEASURES		
HOW MUCH DID WE DO?	Actual	% of Goal
# of Unique New Participants engaged in new programs	86	86.0%
# of Unique Participants referred to external partners for additional support	64	85.3%
# of Unique Participants engaged through digital and in-person outreach	1309	43.6%
# of Unique community events attended by Eden Church staff	27	90.0%
# of consultations with unique new individuals	148	148.0%
HOW WELL DID WE DO?	Actual	% of Goal
# of Unique New Participants impacted through workshops	63	63.0%
# of Unique New or existing county agencies or community-based non-profits committing to provide new programs and workshops for participants	4	133.3%
# of Unique hosted workshops focused on emergent issues*	11	157.1%
IS ANYONE BETTER OFF?	Actual	% of Goal
# of Unique Participants who receive Supportive Services through referral	93	124.0%
# of unique participants who received "warm" referrals to career or training programs	32	128.0%



We're not just serving a
community, we *are* the community
we serve.

Thank you for partnering with us,
ACWDB!