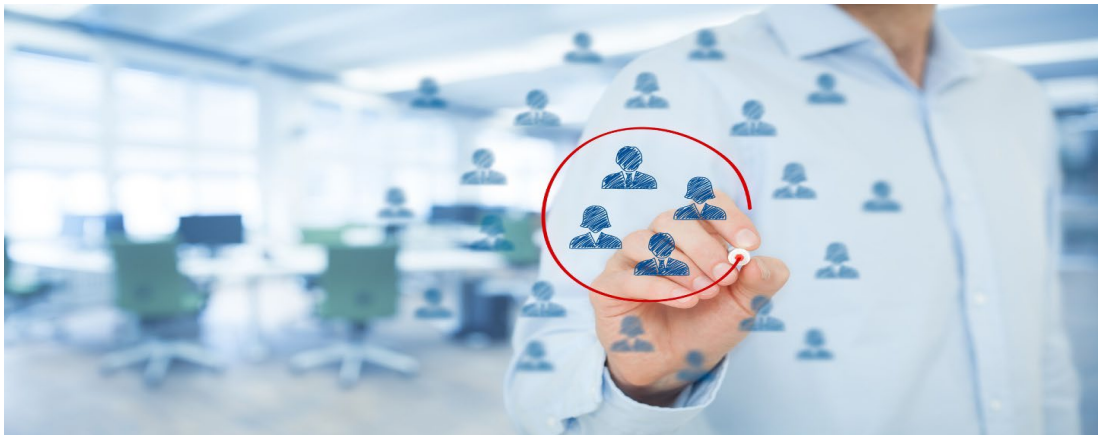


Quarterly Labor Market Report



May 2019

Prepared by: Latoya Reed, Management Analyst

Quarterly Census of Employment and Wages

Services for the Elderly and Disabled accounted for the most overall employment in Alameda County, between July and September 2018, but wages and employment growth remain low. By the end of the quarter, there were only 23 additional jobs with an average weekly wage of \$336. See table 1.¹

Temporary help services had the largest employment surge, resulting in an additional 673 jobs in Alameda County in the latest quarter for which data is available, perhaps an indicator of a flurry of gig workers. The average weekly wage was also slightly higher than most, at \$824. This industry is characterized as staffing agencies and workers who work on a temporary basis.

Quarterly industry establishments that lost jobs from the start of the quarter to the end include: Full service restaurants, limited service restaurants, managing offices, custom computer programming services and others.

Table 1. Quarterly Industry Establishments and Wages

Industry	Quarterly Establishments	July Employment	August Employment	September Employment	End of Quarter Change	Average Weekly Wage
Services for the elderly and disabled	22,375	27,170	27,204	27,193	23	\$336
Full-service restaurants	1,480	26,303	26,330	25,848	-455	533
Limited-service restaurants	1,245	19,348	19,371	19,313	-35	431
Managing offices	229	16,854	16,811	16,796	-58	2,689
Temporary help services	152	12,991	13,544	13,664	673	824
Research and development in the physical, engineering, and life sciences	183	12,859	12,697	12,477	-382	2,634
Supermarkets and other grocery stores	343	12,336	12,358	12,240	-96	656
Custom computer programming services	808	8,621	8,613	8,409	-212	3,502
Computer systems design services	790	8,003	7,977	7,859	-144	2,511
Offices of physicians, except mental health	829	7,811	7,771	7,765	-46	2,106

¹ The Quarterly Census of Employment and Wages (QCEW) is a Bureau of Labor Statistics (BLS) data set that quantifies the number of establishments, employment, and wages in a region over the course of a three-month period. The latest data available is third quarter data or July-September 2018. The data generally lags by two quarters.

Occupational Employment Statistics

Occupationally, the San Francisco, Oakland, and Hayward Metropolitan Statistical Area (MSA) is largely characterized by office and administrative support jobs, followed by employment in food service, sales, business, finance, management, and technology.² In May 2018, the MSA had a total of 2,419,090 jobs.

The occupations that rise to the top in the San Francisco, Oakland, and Hayward MSA may be indicative of how general they are in scope, versus those occupations lower on the list which may be more specialized in scope. Office, administrative support, and sales employment, may be a natural entry point and opportunity for many job seekers just entering the labor market. See Table 2.

Table 2. General Occupations: 2000+ employment

General Occupations	Employment
Office and Administrative Support Occupations	321,830
Food Preparation and Serving Related Occupations	218,390
Sales and Related Occupations	216,350
Business and Financial Operations Occupations	192,020
Management Occupations	186,210
Computer and Mathematical Occupations	146,420
Transportation and Material Moving Occupations	140,300
Education, Training, and Library Occupations	131,240
Personal Care and Service Occupations	126,960
Healthcare Practitioners and Technical Occupations	112,170
Production Occupations	96,710
Construction and Extraction Occupations	95,850
Building and Grounds Cleaning and Maintenance Occupations	71,330
Installation, Maintenance, and Repair Occupations	66,470
Architecture and Engineering Occupations	54,950
Arts, Design, Entertainment, Sports, and Media Occupations	52,560
Protective Service Occupations	45,260
Healthcare Support Occupations	44,150
Life, Physical, and Social Science Occupations	37,300
Community and Social Service Occupations	35,330
Legal Occupations	25,280
Farming, Fishing, and Forestry Occupations	2,020

² The Occupational Employment Statistics (OES) reflects May 2018 data and encompasses the following five counties: Alameda, Contra Costa, Marin County, San Francisco, and San Mateo.

Drilling down further reveals more specific occupational titles that vary in skill level and educational attainment. The region still has numerous employment in lower paying occupations. Table 3 reflects occupational employment of 16,000 individuals or more in the San Francisco, Oakland, and Hayward MSA.

Table 3. Detailed Occupations: 16,000+ employment

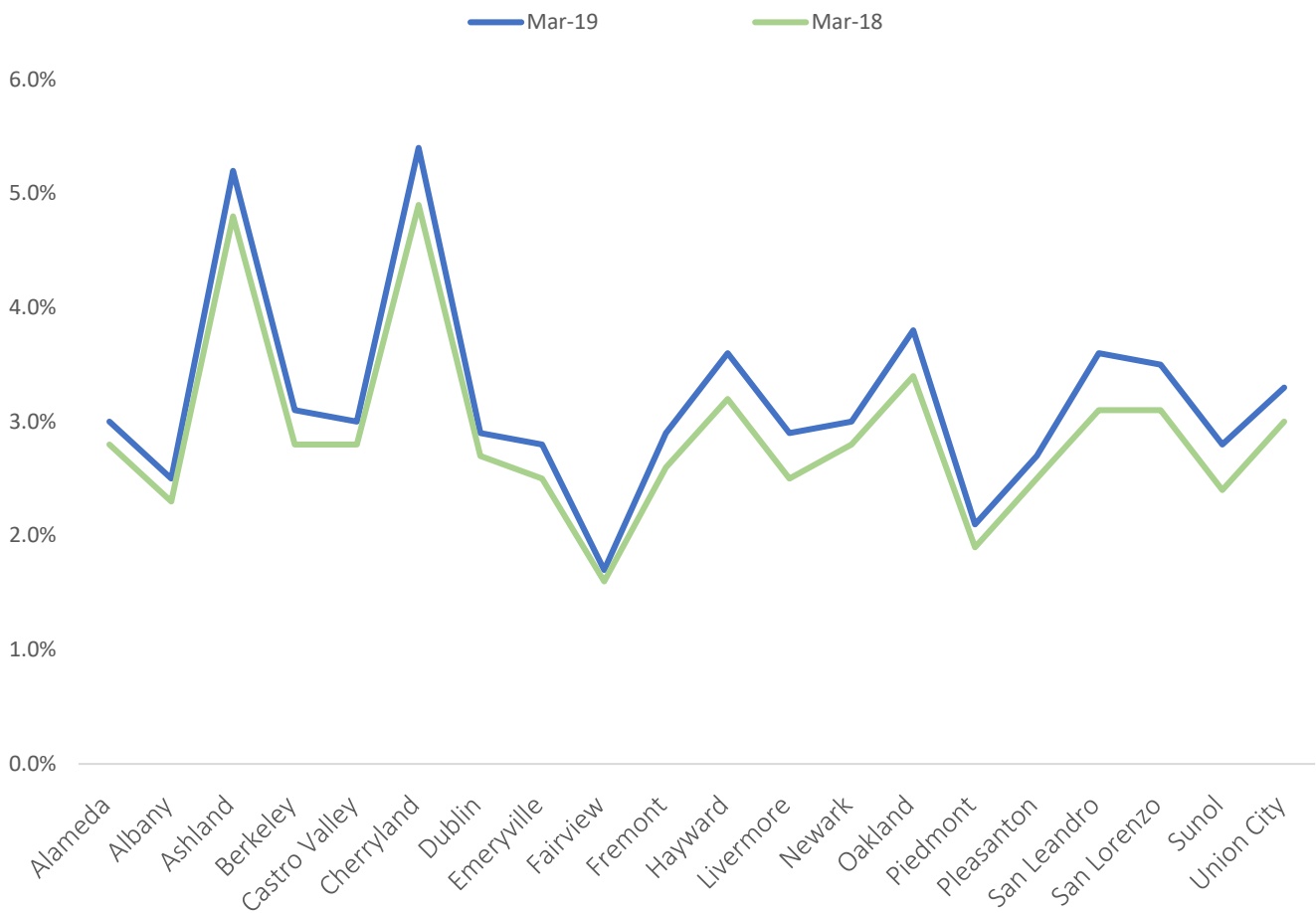
Detailed Occupations	Employment
Personal Care Aides	72,150
Cashiers	51,660
Retail Salespersons	50,380
Combined Food Preparation and Serving Workers, Including Fast Food	49,220
Waiters and Waitresses	42,870
Software Developers, Applications	42,460
General and Operations Managers	41,470
Office Clerks, General	40,650
Registered Nurses	38,740
Janitors and Cleaners, Except Maids and Housekeeping Cleaners	37,770
Business Operations Specialists, All Other	35,580
Laborers and Freight, Stock, and Material Movers, Hand	35,250
Secretaries and Administrative Assistants, Except Legal, Medical, and Executive	33,060
Customer Service Representatives	30,980
Stock Clerks and Order Fillers	26,970
Accountants and Auditors	26,730
Cooks, Restaurant	26,570
Sales Representatives, Services, All Other	25,450
Bookkeeping, Accounting, and Auditing Clerks	24,300
Market Research Analysts and Marketing Specialists	23,680
First-Line Supervisors of Office and Administrative Support Workers	22,820
Assemblers and Fabricators, All Other, Including Team Assemblers	20,490
Teacher Assistants	19,760
Computer Occupations, All Other	19,480
Security Guards	18,890
Management Analysts	17,970
Sales Representatives, Wholesale and Manufacturing, Except Technical and Scientific Products	17,790
Carpenters	17,620
Computer and Information Systems Managers	17,590
Elementary School Teachers, Except Special Education	17,260
Software Developers, Systems Software	17,090
Maintenance and Repair Workers, General	17,070
Lawyers	16,490
Food Preparation Workers	16,410
Financial Managers	16,320

Labor Force and Unemployment Rate

In the East Bay region (Alameda and County Costa counties), there were more people in the labor force in March 2019 (1,428,200) than last year in March 2018 (1,408,600), representing a 1.4% change. The unemployment rate also hiked from last year, from 3.2% in March 2018 to 3.4% in March 2019. The unemployment rate for the state also fluctuated slightly, from 4.4% in March 2018 to 4.6% in March 2019.³

In Alameda County, the unemployment rate in March 2019 was 3.3% compared to 3.0% in March 2018. Most noticeably, unemployment from last March has increased the most for the following cities or areas: Ashland, Cherryland, Hayward, Livermore, Oakland, San Leandro, San Lorenzo, and Sunol. See Graph 1.

Graph 1. Unemployment Rate Alameda County – One Year Change

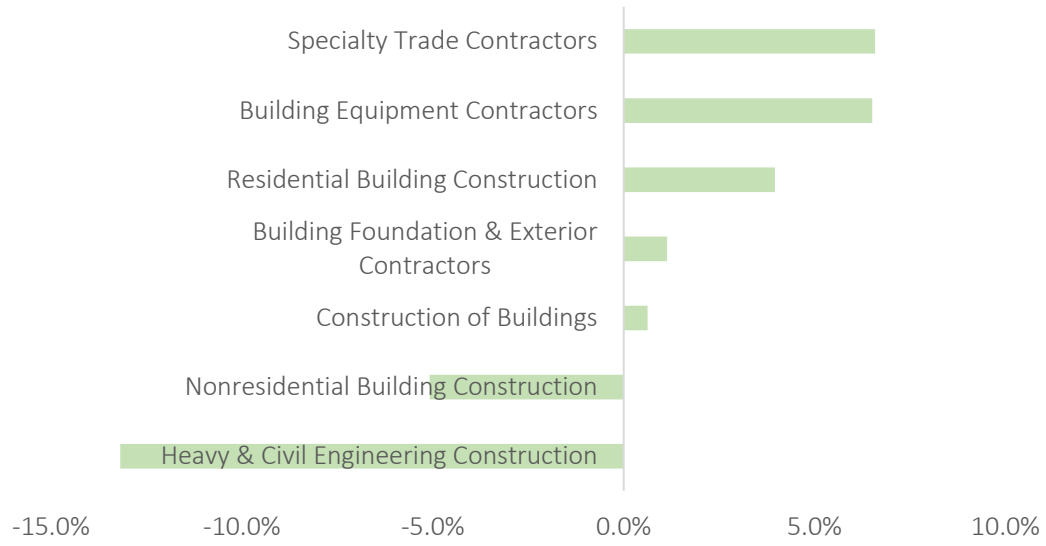


³ Data Source: Employment Development Department Labor Market Information Division

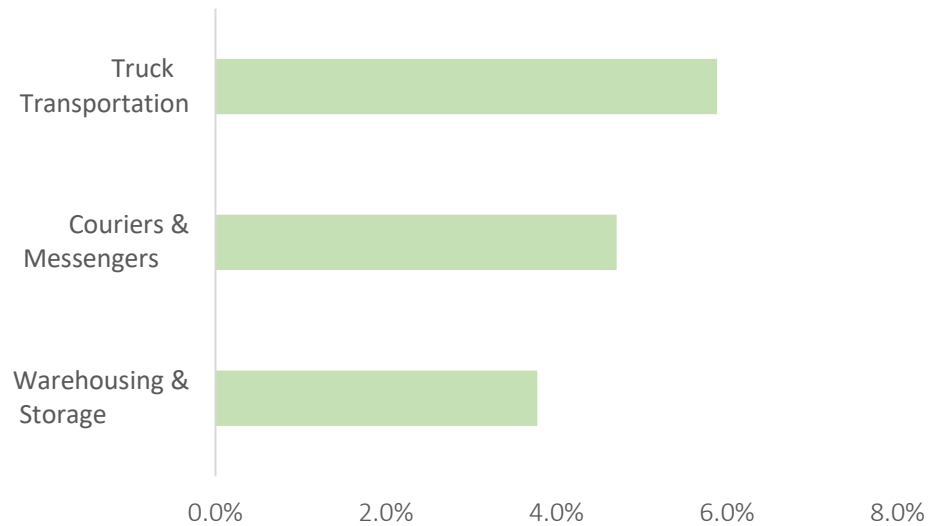
Industry Employment in the East Bay – Alameda and Contra Costa Counties

Industry employment in the two-county East Bay region presented both growth and decline. The graphs below represent the overall percent change to industry employment in the East Bay, from March 2018 to March 2019. See graphs 2-5 and Attachment 1 for more information.

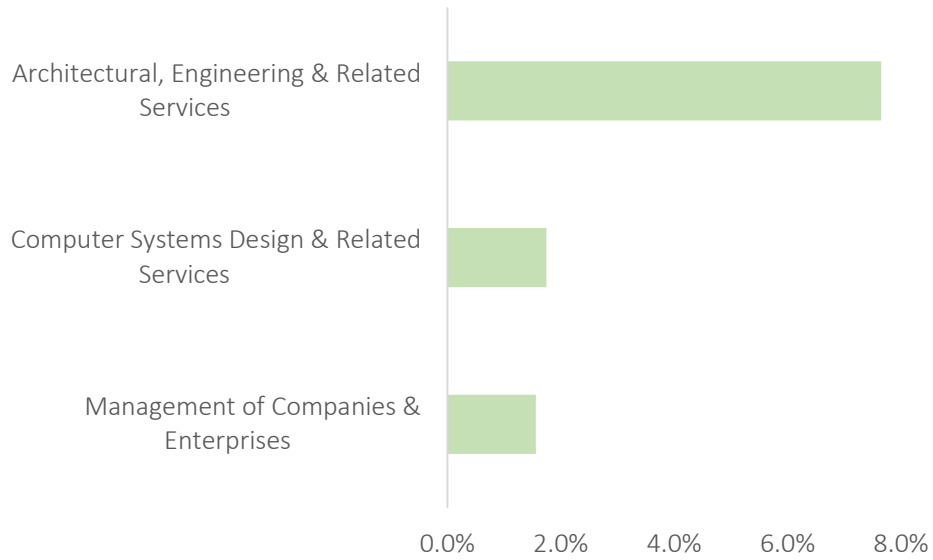
Graph 2. Construction Employment – Growth and Decline



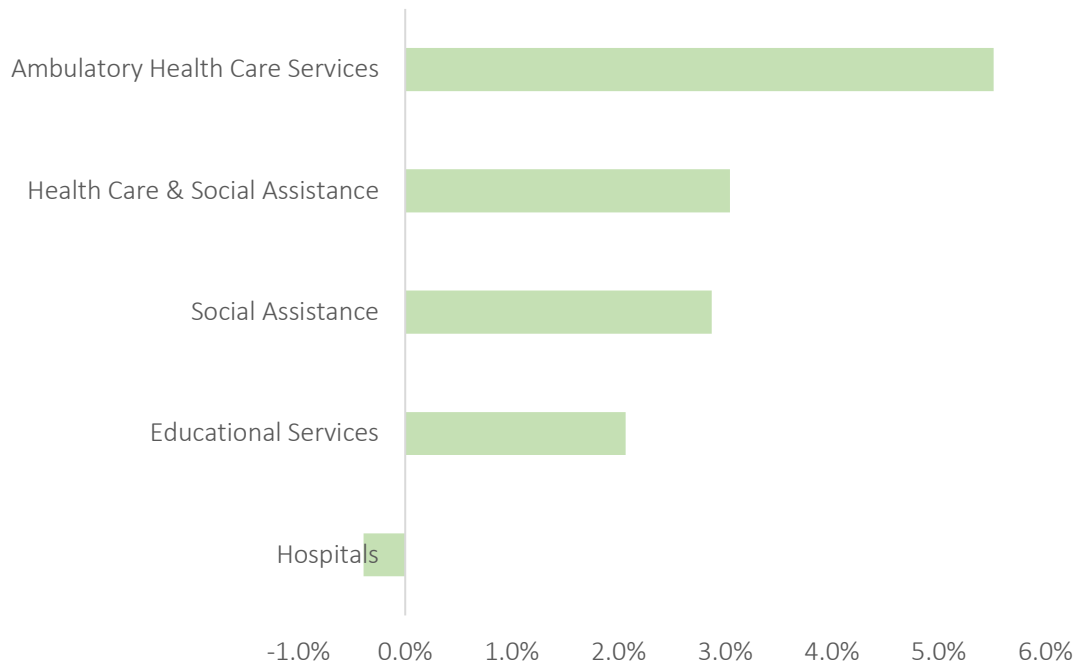
Graph 3. Transportation and Warehousing Employment – Growth and Decline



Graph 4. Professional, Scientific, and Technical Services Employment – Growth and Decline



Graph 5. Educational and Health Services – Growth and Decline



April 19, 2019
Employment Development Department
Labor Market Information Division
(916) 262-2162

Oakland Hayward Berkeley MD
(Alameda and Contra Costa Counties)
Industry Employment & Labor Force
March 2018 Benchmark

Data Not Seasonally Adjusted

	Mar 18	Jan 19	Feb 19 Revised	Mar 19 Prelim	Percent Change	
					Month	Year
Civilian Labor Force (1)	1,408,600	1,427,800	1,431,700	1,428,200	-0.2%	1.4%
Civilian Employment	1,364,100	1,377,700	1,385,700	1,379,600	-0.4%	1.1%
Civilian Unemployment	44,500	50,100	45,900	48,500	5.7%	9.0%
Civilian Unemployment Rate (CA Unemployment Rate)	3.2%	3.5%	3.2%	3.4%		
(U.S. Unemployment Rate)	4.4%	4.8%	4.4%	4.6%		
	4.1%	4.4%	4.1%	3.9%		
Total, All Industries (2)	1,174,100	1,176,500	1,184,500	1,192,100	0.6%	1.5%
Total Farm	1,100	1,100	1,100	1,200	9.1%	9.1%
Total Nonfarm	1,173,000	1,175,400	1,183,400	1,190,900	0.6%	1.5%
Total Private	995,500	1,001,500	1,006,500	1,012,400	0.6%	1.7%
Goods Producing	173,200	172,100	173,600	175,200	0.9%	1.2%
Mining, Logging, and Construction	73,900	73,700	75,100	76,000	1.2%	2.8%
Mining and Logging	200	200	200	200	0.0%	0.0%
Construction	73,700	73,500	74,900	75,800	1.2%	2.8%
Construction of Buildings	16,000	16,000	16,300	16,100	-1.2%	0.6%
Residential Building Construction	10,100	10,400	10,600	10,500	-0.9%	4.0%
Nonresidential Building Construction	5,900	5,600	5,700	5,600	-1.8%	-5.1%
Heavy & Civil Engineering Construction	9,100	7,600	7,700	7,900	2.6%	-13.2%
Specialty Trade Contractors	48,600	49,900	50,900	51,800	1.8%	6.6%
Building Foundation & Exterior Contractors	8,800	8,600	8,800	8,900	1.1%	1.1%
Building Equipment Contractors	21,500	22,400	22,800	22,900	0.4%	6.5%
Manufacturing	99,300	98,400	98,500	99,200	0.7%	-0.1%
Durable Goods	66,100	65,300	65,400	66,000	0.9%	-0.2%
Computer & Electronic Product Manufacturing	18,700	19,300	19,400	19,600	1.0%	4.8%
Nondurable Goods	33,200	33,100	33,100	33,200	0.3%	0.0%
Service Providing	999,800	1,003,300	1,009,800	1,015,700	0.6%	1.6%
Private Service Providing	822,300	829,400	832,900	837,200	0.5%	1.8%
Trade, Transportation & Utilities	202,700	205,000	203,800	203,600	-0.1%	0.4%
Wholesale Trade	48,000	47,600	47,500	47,900	0.8%	-0.2%
Merchant Wholesalers, Durable Goods	27,500	27,100	27,000	27,300	1.1%	-0.7%
Merchant Wholesalers, Nondurable Goods	18,000	17,900	17,900	17,900	0.0%	-0.6%
Retail Trade	113,700	114,500	113,600	112,900	-0.6%	-0.7%
Motor Vehicle & Parts Dealer	13,500	13,600	13,700	13,600	-0.7%	0.7%
Food & Beverage Stores	25,500	25,800	25,900	25,700	-0.8%	0.8%
Health & Personal Care Stores	7,600	7,600	7,300	7,300	0.0%	-3.9%
Clothing & Clothing Accessories Stores	10,800	10,900	10,500	10,400	-1.0%	-3.7%
Sporting Goods, Hobby, Book & Music Stores	4,800	4,700	4,500	4,500	0.0%	-6.3%
General Merchandise Stores	19,600	21,800	20,800	20,300	-2.4%	3.6%
Transportation, Warehousing & Utilities	41,000	42,900	42,700	42,800	0.2%	4.4%
Transportation & Warehousing	35,400	37,300	37,000	37,100	0.3%	4.8%
Truck Transportation	8,500	8,900	8,900	9,000	1.1%	5.9%
Couriers & Messengers	8,500	9,400	8,900	8,900	0.0%	4.7%
Warehousing & Storage	5,300	5,500	5,500	5,500	0.0%	3.8%
Information	27,400	27,100	27,200	27,200	0.0%	-0.7%
Publishing Industries (except Internet)	7,500	7,500	7,500	7,500	0.0%	0.0%
Telecommunications	6,200	5,600	5,600	5,600	0.0%	-9.7%
Financial Activities	55,000	54,300	54,800	54,900	0.2%	-0.2%
Finance & Insurance	37,600	36,600	36,600	36,700	0.3%	-2.4%
Credit Intermediation & Related Activities	16,700	15,900	15,800	15,700	-0.6%	-6.0%
Insurance Carriers & Related	16,500	16,400	16,400	16,400	0.0%	-0.6%
Real Estate & Rental & Leasing	17,400	17,700	18,200	18,200	0.0%	4.6%
Real Estate	13,500	13,600	14,100	14,100	0.0%	4.4%
Professional & Business Services	186,300	191,500	192,900	194,300	0.7%	4.3%
Professional, Scientific & Technical Services	95,200	98,200	98,100	98,800	0.7%	3.8%
Architectural, Engineering & Related Services	17,000	18,200	18,300	18,300	0.0%	7.6%
Computer Systems Design & Related Services	22,900	23,500	23,500	23,300	-0.9%	1.7%
Management of Companies & Enterprises	25,600	25,700	26,000	26,000	0.0%	1.6%

Data Not Seasonally Adjusted

	Mar 18	Jan 19	Feb 19	Mar 19	Percent Change	
			Revised	Prelim	Month	Year
Administrative & Support & Waste Services	65,500	67,600	68,800	69,500	1.0%	6.1%
Administrative & Support Services	59,100	61,500	62,300	63,300	1.6%	7.1%
Employment Services	24,000	26,200	26,600	26,900	1.1%	12.1%
Investigation & Security Services	9,800	10,200	10,300	10,300	0.0%	5.1%
Services to Buildings & Dwellings	16,000	16,000	16,100	16,300	1.2%	1.9%
Educational & Health Services	195,100	197,100	199,600	200,800	0.6%	2.9%
Educational Services	24,200	23,200	24,500	24,700	0.8%	2.1%
Health Care & Social Assistance	170,900	173,900	175,100	176,100	0.6%	3.0%
Ambulatory Health Care Services	67,100	69,100	70,200	70,800	0.9%	5.5%
Hospitals	25,700	25,600	25,500	25,600	0.4%	-0.4%
Nursing & Residential Care Facilities	22,400	22,300	22,400	22,400	0.0%	0.0%
Social Assistance	55,700	56,900	57,000	57,300	0.5%	2.9%
Leisure & Hospitality	115,200	114,700	115,400	117,500	1.8%	2.0%
Arts, Entertainment & Recreation	16,700	17,300	17,500	17,600	0.6%	5.4%
Accommodation & Food Services	98,500	97,400	97,900	99,900	2.0%	1.4%
Accommodation	8,200	8,400	8,400	8,500	1.2%	3.7%
Food Services & Drinking Places	90,300	89,000	89,500	91,400	2.1%	1.2%
Other Services	40,600	39,700	39,200	38,900	-0.8%	-4.2%
Repair & Maintenance	11,400	10,900	10,800	10,700	-0.9%	-6.1%
Personal & Laundry Services	12,700	12,800	12,600	12,500	-0.8%	-1.6%
Religious, Grants, Civic, Professional & Like Or	16,500	16,000	15,800	15,700	-0.6%	-4.8%
Government	177,500	173,900	176,900	178,500	0.9%	0.6%
Federal Government	13,500	13,700	13,700	13,700	0.0%	1.5%
Department of Defense	300	300	300	300	0.0%	0.0%
Federal Government excluding Department of	13,200	13,400	13,400	13,400	0.0%	1.5%
State & Local Government	164,000	160,200	163,200	164,800	1.0%	0.5%
State Government	40,500	37,700	40,100	40,600	1.2%	0.2%
State Government Education	29,000	26,200	28,600	29,100	1.7%	0.3%
State Government Excluding Education	11,500	11,500	11,500	11,500	0.0%	0.0%
Local Government	123,500	122,500	123,100	124,200	0.9%	0.6%
Local Government Education	64,200	63,400	63,800	64,700	1.4%	0.8%
Local Government Excluding Education	59,300	59,100	59,300	59,500	0.3%	0.3%
County	25,300	25,200	25,300	25,200	-0.4%	-0.4%
City	17,700	17,600	17,700	17,800	0.6%	0.6%
Special Districts plus Indian Tribes	16,300	16,300	16,300	16,500	1.2%	1.2%

Notes:

(1) Civilian labor force data are by place of residence; include self-employed individuals, unpaid family workers, household domestic workers, & workers on strike. Data may not add due to rounding. The unemployment rate is calculated using unrounded data.

(2) Industry employment is by place of work; excludes self-employed individuals, unpaid family workers, household domestic workers, & workers on strike. Data may not add due to rounding.

These data are produced by the Labor Market Information Division of the California Employment Development Department (EDD). Questions should be directed to: Nati Martinez 209-941-6551 or Sheila Stock 916-651-5914

These data, as well as other labor market data, are available via the Internet at <http://www.labormarketinfo.edd.ca.gov>. If you need assistance, please call (916) 262-2162.

#####